

# Impulse Winding Tester

VE2882A-3U / VE2882A2-3U / VE2882A4-3U  
VE2882A-5U / VE2882A2-5U / VE2882A4-5U

**VASAVI**

Pioneer In Test Automation



**Single Channel Impulse Winding Tester**



**Multi Channel Impulse Winding Tester**

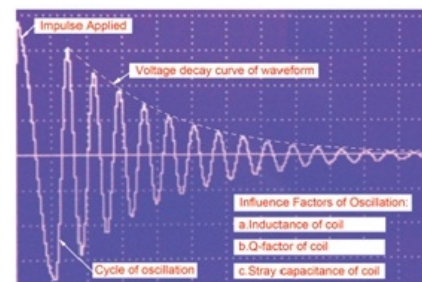
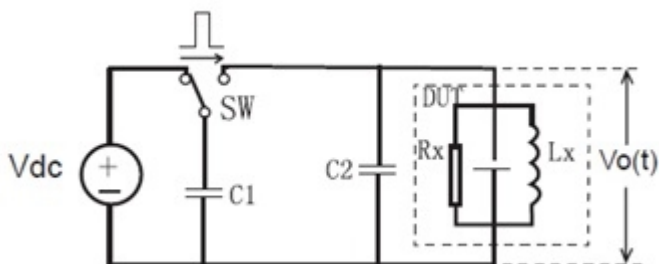
## Brief Introduction :

Because of the influence of coil wire material, magnetic material, framework and process craft etc., coil can generate debasement of the insulation performance of the coil layer. Impulse winding tester adopts high-speed sampling technique. It is a new analysis test instrument for insulation performance of coils. While testing, it compares the waveform with the sample wave form according to criterion of settings (Area, Differential Area, Corona Discharge, Differential Phase etc. ) that is stored in the instrument. It is has user user-friendly options and high testing speed.

## Theory of Impulse Tester :

The impulse winding tester tests the electrical characteristics of coil winding without damaging the DUT. The prerequisite conditions for quality of a coil can be detected at just a glance. The detection is carried out when the same electric impulse by capacitor discharge is applied to the standard and the DUT. The voltage decay waveform is generated in response to the impulse, related to the Q-factor and inductance of the coil. In this sense, the tester can detect turn & layer short, the differences in the number of turns and the material of the core. If high impulse voltage is applied, the poor insulation will appear as a corona or layer discharge.

## Decay Curve of winding Voltage :



## Main Functions :

- Low inductance impulse test: down to 10μH
- Low energy test without damaging the coil
- Fast detection of winding insulation at a speed of 15 meas/sec
- 4 kinds of waveform comparison methods
- Up to 100 MSPS sampling rate
- 65K Color 7" TFT Display
- Friendly user's interface and easy operation
- Multi-trigger mode programmable
- Voltage, Time and Frequency measuring function
- Direct display of comparison result
- Keyboard lock and password protection function
- Optional Handler, RS-232C, and USB
- Waveforms can be stored in USB disk (optional)
- Multi-channel scan control interface: SCANNER (optional)
- Max. Test Voltage Range is 500V ~ 5KV

**VASAVI ELECTRONICS**

# 95, Road No.6A, Jyothi Colony, SECUNDERABAD - 500 015, (T.S), INDIA

Tel : +91 - 40 - 27744445 ; Web : www.vasavi.co.in / www.vasavi.com ; E-mail : vasavielectronics@gmail.com

# Impulse Winding Tester

VE2882A-3U / VE2882A2-3U / VE2882A4-3U  
VE2882A-5U / VE2882A2-5U / VE2882A4-5U



Pioneer In Test Automation

## Specification :

Model	VE2882A-3U	VE2882A2-3U	VE2882A4-3U	VE2882A-5U	VE2882A2-5U	VE2882A4-5U	
Channels	1	2	4	1	2	4	
Impulse Voltage	100V ~ 3000V, 10V Step Accuracy : + 5% + 10V			100V ~ 5000V, 10V Step Accuracy : + 5% + 10V			
Inductance Range	>10uH	>20uH		>10uH	20uH		
Impulse Energy	0.09 Joule			0.25 Joule			
Measurement Speed	Single Channel : 15 Mes/Sec Multi Channel : 12 Mes/Sec (Single Winding Test) 2 Mes/Sec (Four Winding Test)						
Pulse Applied	Measuring Pulse up to 32, Demagnetization pulse up to 8						
Input Impedance	10M Ohm						
Display Type	800x480 dots, 65K Color TFT Waveform display 650x256 dots						
Waveform Acquisition	Sampling Rate : Max. 100 Msps, 10 grades (adjustable) Resolution : 8 Bits Memory Depth : 6500 Bytes Average : 1-32						
Comparison Methods	Comparisons with standard waveform Area Size Differential Area Corona Discharge Differential Phase						
Accuracy of repetition	± 1%						
Waveform Measurement	Voltage, Frequency, Time						
Trigger Mode	Manual / External / Internal						
Detection Output	OK / NG Display, LED Indications, Sound Alarm						
Measurement Status	Statistics of measurement results and time, Max.20000						
Memory	Internal	300	150	120	300	150	120
	USB Disk	600 gruous (standard waveform and measurement settings)					
Optional Interface	Handler (Start, Stop, Pass, Fail, Busy, EOC) RS232 USB Device (Support USB TMC and USB CDC) USB Host (Supports FAT16 and FAT32, BMP, GIF, PNG, CSV Files)						
<b>Power</b>							
Power Supply	220V ± 10% ; 50Hz ± 5%						

**VASAVI ELECTRONICS**

# 95, Road No.6A, Jyothi Colony, SECUNDERABAD - 500 015, (T.S), INDIA

Tel : +91 - 40 - 27744445 ; Web : www.vasavi.co.in / www.vasavi.com ; E-mail : vasavielectronics@gmail.com