

AUTOMATIC WINDING TEST SYSTEM

(Impulse, AC/DC Hi-Pot, IR, Inductances & DC Resistance Winding Tester)

VASAVI

Pioneer In Test Automation

NEW



Multi Channel Motor Tester

Note : Equipment may look different from the above

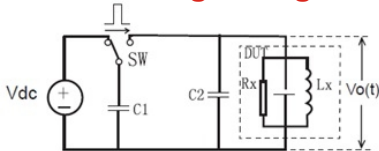
Brief Introduction :

Motor Winding Tester is the latest microprocessor based intelligent tester, with multiple test functions and with Six or Twelve channels. With this Equipment we can measure Impulse Test (Inter Turn or Layer Short) , AC/DC Withstanding Test (Hi-Pot) , Insulation Resistance Test (IR) , Inductance Test (L) , DC Resistance Test (Rdc) on any Motor Winding , Alternator Winding , Fan Motor Winding. It has user friendly operation for ease in using and for fast testing speed.

Theory of Impulse Test :

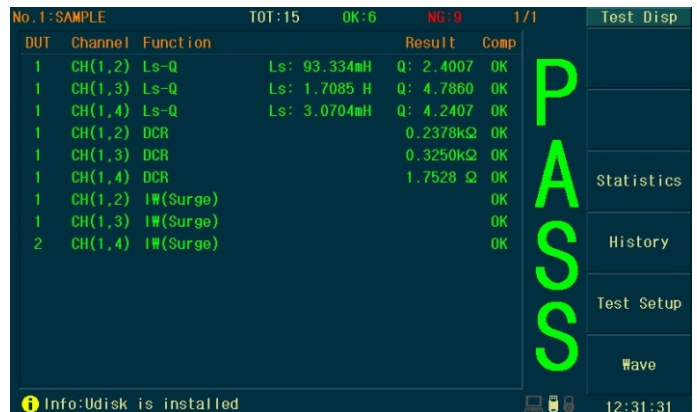
The impulse winding tester tests the electrical characteristics of coil winding without damaging the DUT. The prerequisite conditions for quality of a coil can be detected at just a glance. The detection is carried out when the same electric impulse by capacitor discharge is applied to the standard and the DUT. The voltage decay waveform is generated in response to the impulse, related to the Q-factor and inductance of the coil. In this sense, the tester can detect turn & layer short, the differences in the number of turns and the material of the core. If high impulse voltage is applied, the poor insulation will appear as a corona or layer discharge.

Decay Curve of winding Voltage :



Main Functions :

- High Display Resolution with 800x480 , 7" TFT Display
- **Test Functions** : AC/DC Hipot , IR , Impulse Test (IW), DC Resistance (Rdc) , Inductance (L)
- Programmable Multi-Channel (6) Scanning Test
- Four Terminal Measurement for Rdc & L
- Low energy test without damaging the coil
- 4 kinds of waveform comparison methods
- Friendly user's interface and easy operation
- Direct display of comparison result
- Keyboard lock and password protection function
- Optional Handler Interface
- Max. Test Voltage Range is 500V ~ 5KV



Other Functions :

| | | |
|--------------------|--|--|
| Test channels | 6 Channels | |
| Detection Output | PASS / FAIL display with LED light & Bleep Alarm | |
| Memory | Internal | 180 groups (standard waveform data and test setup parameters) |
| | U-disk | 600 groups |
| Optional Interface | | HANDLER (START, STOP, PASS, FAIL, EOM) |
| | | USB Host (support storage of BMP, GIF, PNG image files and firmware upgrade) |

VASAVI ELECTRONICS

95, Road No.6A, Jyothi Colony, SECUNDERABAD - 500 015, (T.S), INDIA

Tel : +91 - 40 - 27744445 ; Web : www.vasavi.co.in / www.vasavi.com ; E-mail : vasavielectronics@gmail.com

AUTOMATIC WINDING TEST SYSTEM

(Impulse, AC/DC Hi-Pot, IR, Inductances & DC Resistance Winding Tester)

VASAVI

Pioneer In Test Automation

Specification :

| DC Resistance Measurement (Rdc) : | |
|---|--|
| Range | 5mΩ ~ 20kΩ (four-wire measurement) |
| Basic accuracy | 5mΩ ~ 200mΩ ± (0.5% ± 0.5mΩ) |
| | 200mΩ ~ 20kΩ ± (0.3% ± 5mΩ) |
| Inductance Measurement (L) : | |
| Test parameter | Ls, Lp |
| Test frequency | 50Hz, 60Hz, 100Hz, 120Hz, 1kHz, 10kHz, 20kHz, 40kHz, 50kHz, 100kHz |
| Test level | 0.1V, 0.3V, 1.0V |
| Output Impedance | 100Ω |
| Basic Accuracy | ± 0.3% |
| Measurement display range | 0.001uH~9.9999kH |
| Insulation Resistance Test (IR) : | |
| Out-out Voltage | 0.100kV ~ 1.000kV ±(1.5% of reading + 5 counts) |
| Resistance Measurement Range | 1MΩ ~ 10GΩ |
| Test Time | 0.3s ~ 999.9s |
| Accuracy | <500V 1 MOhm ~1GOhm : ± (10% of reading ± 5 counts) |
| | >=500V 1 MOhm ~1GOhm : ± (5% of reading ± 5 counts) |
| | 1GOhm ~10 GOhm : ± (10% of reading ± 5 counts) |
| AC / DC Withstanding Test (Hi-Pot) : | |
| Output-Voltage Range | AC: 0.050kV~5.000kV (±3% of reading ± 5 digits) |
| | DC: 0.050kV~6.000kV (±3% of reading ± 5 digits) |
| Current Measurement Range | AC: 0~30mA |
| | DC: 0~10mA |
| ARC Detect | AC: 1mA ~ 15mA |
| | DC: 1mA ~ 10mA |
| Test Time | 0.3s~999.9s |
| Accuracy | ± 3% |
| Impulse Winding Test : | |
| Impulse voltage | 100V~5000V @ Steps of 10V step (± 5% ± 10V) |
| Comparison methods | Area, Differential Area, Corona and Differential Phase |
| Test repeated accuracy | 2% |

VASAVI ELECTRONICS

95, Road No.6A, Jyothi Colony, SECUNDERABAD - 500 015, (T.S), INDIA

Tel : +91 - 40 - 27744445 ; Web : www.vasavi.co.in / www.vasavi.com ; E-mail : vasavielectronics@gmail.com